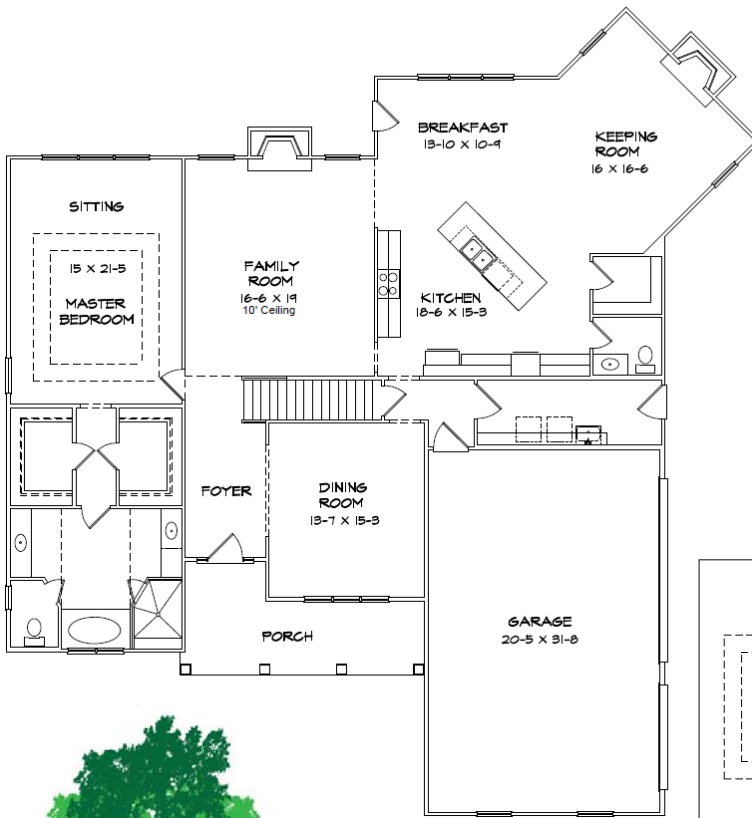




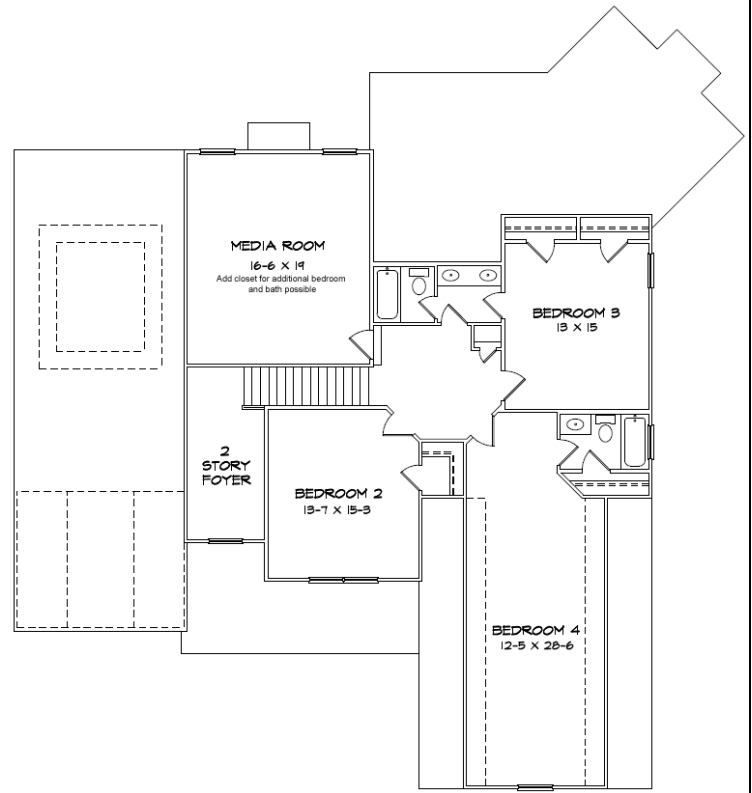
With media room and three car garage



**CLEARWATER**

1 <sup>ST</sup> Level	2290
2 <sup>ND</sup> Level	1460
<b>TOTAL</b>	<b>3750</b>

THE ESTATES AT  
**PERSIMMON**



**Sales & Marketing By:**  
**Robin Weaver**  
**Bush Real Estate Group**  
**Direct Line : 770-318-7313**

[www.greenconstructionllc.com](http://www.greenconstructionllc.com)

All information is believed accurate but not warranted.

Prices and floor plans are subject to changes, errors and omissions without notice. All images are copyrighted by original designer.

